

ADMITTED BY LEVEL REPORT

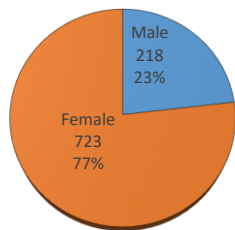
Fall 2019

Sex, Residency, Age & Full/Part Time Totals

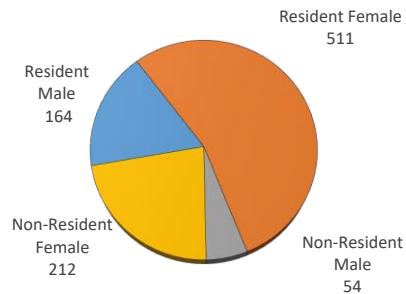
University of Oklahoma Health Sciences Center

LEVEL/COLLEGE	GENDER				RESIDENCY STATUS						AGE DISTRIBUTION						ENROLLMENT STATUS					
	TOT	Male	Female	%F	RESIDENT			NON-RESIDENT			0-20	21-25	26-30	31-40	41-50	>50+ Unkn	FULL TIME			PART TIME		
					Male	Female	%	Male	Female	%							Male	Female	%F	Male	Female	%F
UNDERGRADUATE	389	25	364	94%	25	270	76%	0	94	24%	156	153	33	34	11	2	20	303	83%	5	61	17%
Allied Health	37	1	36	97%	1	22	62%	0	14	38%	28	4	1	3	1	0	0	32	86%	1	4	14%
Dentistry	51	1	50	98%	1	48	96%	0	2	4%	10	33	7	1	0	0	1	46	92%	0	4	8%
Nursing	301	23	278	92%	23	200	74%	0	78	26%	118	116	25	30	10	2	19	225	81%	4	53	19%
HEALTH PROFESSIONAL	457	157	300	66%	125	214	74%	32	86	26%	5	375	46	23	7	1	126	177	66%	31	123	34%
Allied Health	127	3	124	98%	1	65	52%	2	59	48%	0	111	12	3	1	0	1	44	35%	2	80	65%
Dentistry	0	0	0	-	0	0	-	0	0	-	0	0	0	0	0	0	0	0	-	0	0	-
Medicine -MD	190	101	89	47%	84	77	85%	17	12	15%	1	167	14	8	0	0	87	74	85%	14	15	15%
Medicine -PA	0	0	0	-	0	0	-	0	0	-	0	0	0	0	0	0	0	0	-	0	0	-
Nursing	20	3	17	85%	3	17	100%	0	0	0%	0	6	5	4	4	1	1	3	20%	2	14	80%
Pharmacy	72	27	45	63%	21	40	85%	6	5	15%	4	52	10	5	1	0	21	43	89%	6	2	11%
Public Health	48	23	25	52%	16	15	65%	7	10	35%	0	39	5	3	1	0	16	13	60%	7	12	40%
GRADUATE COLLEGE (MS, PhD)	83	30	53	64%	11	22	40%	19	31	60%	2	47	14	18	1	1	13	36	59%	17	17	41%
Allied Health	16	3	13	81%	2	5	44%	1	8	56%	0	12	2	2	0	0	1	2	19%	2	11	81%
Dentistry	0	0	0	-	0	0	-	0	0	-	0	0	0	0	0	0	0	0	-	0	0	-
Graduate -CTS	8	1	7	88%	1	5	75%	0	2	25%	0	0	1	7	0	0	1	7	100%	0	0	0%
Medicine	42	14	28	67%	7	10	40%	7	18	60%	0	27	10	4	1	0	10	26	86%	4	2	14%
Nursing	1	0	1	100%	0	1	100%	0	0	0%	0	0	0	0	0	1	0	1	100%	0	0	0%
Pharmacy	0	0	0	-	0	0	-	0	0	-	0	0	0	0	0	0	0	0	-	0	0	-
Public Health	16	12	4	25%	1	1	13%	11	3	88%	2	8	1	5	0	0	1	0	6%	11	4	94%
TOTAL OUHSC	941	218	723	77%	164	511	72%	54	212	28%	163	577	96	77	22	6	159	516	72%	59	207	28%
Allied Health	180	7	173	96%	4	92	53%	3	81	47%	28	127	15	8	2	0	2	78	44%	5	95	56%
Dentistry	51	1	50	98%	1	48	96%	0	2	4%	10	33	7	1	0	0	1	46	92%	0	4	8%
Graduate -CTS	8	1	7	88%	1	5	75%	0	2	25%	0	0	1	7	0	0	1	7	100%	0	0	0%
Medicine	232	115	117	50%	91	87	77%	24	30	23%	1	194	24	12	1	0	97	100	85%	18	17	15%
Nursing	322	26	296	92%	26	218	76%	0	78	24%	118	122	30	34	14	4	20	229	77%	6	67	23%
Pharmacy	72	27	45	63%	21	40	85%	6	5	15%	4	52	10	5	1	0	21	43	89%	6	2	11%
Public Health	64	35	29	45%	17	16	52%	18	13	48%	2	47	6	8	1	0	17	13	47%	18	16	53%
Norman Inter-Campus	0	0	0	-	0	0	-	0	0	-	0	0	0	0	0	0	0	0	-	0	0	-
Non-Degree	12	6	6	50%	3	5	67%	3	1	33%	0	2	3	2	3	2	0	0	0%	6	6	100%

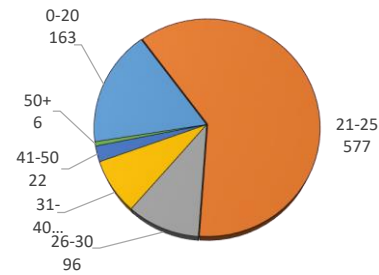
ENROLLMENT BY SEX



RESIDENCY STATUS



AGE DISTRIBUTION



ENROLLMENT STATUS

