

ADMITTED BY LEVEL REPORT

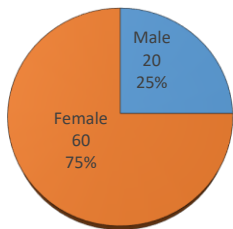
Spring 2020

Gender, Residency, Age & Full/Part Time Totals

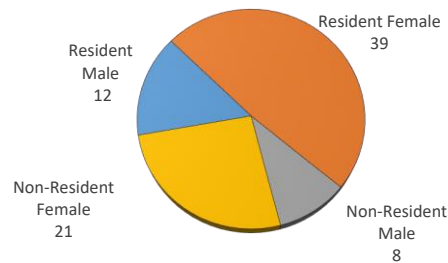
University of Oklahoma Health Sciences Center

LEVEL/COLLEGE	TOT	GENDER			RESIDENCY STATUS						AGE DISTRIBUTION						ENROLLMENT STATUS					
		Male	Female	%F	RESIDENT			NON-RESIDENT			0-20	21-25	26-30	31-40	41-50	>50+ Unkn	FULL TIME			PART TIME		
					Male	Female	%	Male	Female	%							Male	Female	%F	Male	Female	%F
UNDERGRADUATE	39	8	31	79%	4	18	56%	4	13	44%	0	16	11	6	5	1	3	12	38%	5	19	62%
Allied Health	3	1	2	67%	0	1	33%	1	1	67%	0	0	0	0	3	0	0	0	0%	1	2	100%
Dentistry	0	0	0	-	0	0	-	0	0	-	0	0	0	0	0	0	0	0	-	0	0	-
Nursing	36	7	29	81%	4	17	58%	3	12	42%	0	16	11	6	2	1	3	12	42%	4	17	58%
HEALTH PROFESSIONAL	23	8	15	65%	5	10	65%	3	5	35%	0	8	7	4	3	1	0	1	4%	8	14	96%
Allied Health	7	1	6	86%	0	3	43%	1	3	57%	0	3	3	0	0	1	0	0	0%	1	6	100%
Dentistry	0	0	0	-	0	0	-	0	0	-	0	0	0	0	0	0	0	0	-	0	0	-
Medicine -MD	0	0	0	-	0	0	-	0	0	-	0	0	0	0	0	0	0	0	-	0	0	-
Medicine -PA	0	0	0	-	0	0	-	0	0	-	0	0	0	0	0	0	0	0	-	0	0	-
Nursing	4	0	4	100%	0	3	75%	0	1	25%	0	0	1	1	2	0	0	1	25%	0	3	75%
Pharmacy	0	0	0	-	0	0	-	0	0	-	0	0	0	0	0	0	0	0	-	0	0	-
Public Health	12	7	5	42%	5	4	75%	2	1	25%	0	5	3	3	1	0	0	0	0%	7	5	100%
GRADUATE COLLEGE (MS, PhD)	14	4	10	71%	3	7	71%	1	3	29%	0	5	3	5	1	0	2	6	57%	2	4	43%
Allied Health	5	0	5	100%	0	4	80%	0	1	20%	0	1	2	1	1	0	0	2	40%	0	3	60%
Dentistry	0	0	0	-	0	0	-	0	0	-	0	0	0	0	0	0	0	0	-	0	0	-
Graduate -CTS	1	0	1	100%	0	1	100%	0	0	0%	0	0	0	1	0	0	0	1	100%	0	0	0%
Medicine	6	3	3	50%	2	1	50%	1	2	50%	0	3	1	2	0	0	1	2	50%	2	1	50%
Nursing	0	0	0	-	0	0	-	0	0	-	0	0	0	0	0	0	0	0	-	0	0	-
Pharmacy	0	0	0	-	0	0	-	0	0	-	0	0	0	0	0	0	0	0	-	0	0	-
Public Health	2	1	1	50%	1	1	100%	0	0	0%	0	1	0	1	0	0	1	1	100%	0	0	0%
TOTAL OUHSC	80	20	60	75%	12	39	64%	8	21	36%	0	30	22	16	9	3	5	19	30%	15	41	70%
Allied Health	15	2	13	87%	0	8	53%	2	5	47%	0	4	5	1	4	1	0	2	13%	2	11	87%
Dentistry	0	0	0	-	0	0	-	0	0	-	0	0	0	0	0	0	0	0	-	0	0	-
Graduate -CTS	1	0	1	100%	0	1	100%	0	0	0%	0	0	0	1	0	0	0	1	100%	0	0	0%
Medicine	6	3	3	50%	2	1	50%	1	2	50%	0	3	1	2	0	0	1	2	50%	2	1	50%
Nursing	40	7	33	83%	4	20	60%	3	13	40%	0	16	12	7	4	1	3	13	40%	4	20	60%
Pharmacy	0	0	0	-	0	0	-	0	0	-	0	0	0	0	0	0	0	0	-	0	0	-
Public Health	14	8	6	43%	6	5	79%	2	1	21%	0	6	3	4	1	0	1	1	14%	7	5	86%
Norman Inter-Campus	0	0	0	-	0	0	-	0	0	-	0	0	0	0	0	0	0	0	-	0	0	-
Non-Degree	4	0	4	100%	0	4	100%	0	0	0%	0	1	1	1	0	1	0	0	0%	0	4	100%

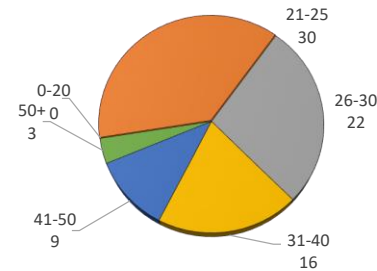
ENROLLMENT BY GENDER



RESIDENCY STATUS



AGE DISTRIBUTION



ENROLLMENT STATUS

