

ADMITTED & ENROLLED BY LEVEL REPORT

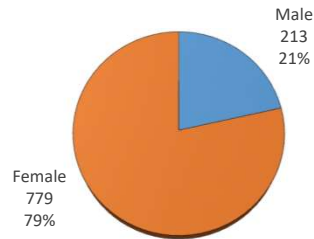
Fall 2024

Gender, Residency, Age & Full/Part Time Totals

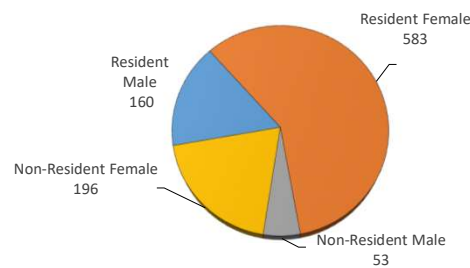
University of Oklahoma Health Sciences Center

LEVEL/COLLEGE	TOT	GENDER			RESIDENCY STATUS						AGE DISTRIBUTION						ENROLLMENT STATUS					
		Male	Female	%F	RESIDENT			NON-RESIDENT			0-20	21-25	26-30	31-40	41-50	>50+ Unkn	FULL TIME			PART TIME		
					Male	Female	%	Male	Female	%							Male	Female	%F	Male	Female	%F
UNDERGRADUATE	511	49	462	90%	37	323	70%	12	139	30%	236	201	27	34	10	3	46	455	98%	3	7	2%
Allied Health	33	3	30	91%	2	18	61%	1	12	39%	27	3	2	1	0	0	1	29	91%	2	1	9%
Dentistry	48	2	46	96%	2	43	94%	0	3	6%	6	32	6	4	0	0	2	46	100%	0	0	0%
Nursing	430	44	386	90%	33	262	69%	11	124	31%	203	166	19	29	10	3	43	380	98%	1	6	2%
HEALTH PROFESSIONAL	419	141	278	66%	115	243	85%	26	35	15%	12	288	60	35	19	5	137	240	90%	4	38	10%
Allied Health	52	0	52	100%	0	42	81%	0	10	19%	1	47	3	1	0	0	0	49	94%	0	3	6%
Dentistry	0	0	0	-	0	0	-	0	0	-	0	0	0	0	0	0	0	0	-	0	0	-
Medicine -MD	188	99	89	47%	74	78	81%	25	11	19%	1	167	14	5	1	0	99	89	100%	0	0	0%
Medicine -PA	0	0	0	-	0	0	-	0	0	-	0	0	0	0	0	0	0	0	-	0	0	-
Nursing	84	13	71	85%	13	69	98%	0	2	2%	0	18	21	24	16	5	10	44	64%	3	27	36%
Pharmacy	61	18	43	70%	18	41	97%	0	2	3%	10	40	8	2	1	0	18	43	100%	0	0	0%
Public Health	34	11	23	68%	10	13	68%	1	10	32%	0	16	14	3	1	0	10	15	74%	1	8	26%
GRADUATE COLLEGE (MS, PhD)	60	22	38	63%	8	17	42%	14	21	58%	0	31	16	8	4	1	21	30	85%	1	8	15%
Allied Health	1	0	1	100%	0	1	100%	0	0	0%	0	1	0	0	0	0	0	1	100%	0	0	0%
Dentistry	0	0	0	-	0	0	-	0	0	-	0	0	0	0	0	0	0	0	-	0	0	-
Graduate -CTS	1	1	0	0%	0	0	0%	1	0	100%	0	1	0	0	0	0	1	0	100%	0	0	0%
Medicine	38	11	27	71%	4	10	37%	7	17	63%	0	21	10	6	1	0	11	22	87%	0	5	13%
Nursing	2	0	2	100%	0	2	100%	0	0	0%	0	0	0	0	2	0	0	1	50%	0	1	50%
Pharmacy	2	2	0	0%	1	0	50%	1	0	50%	0	1	1	0	0	0	2	0	100%	0	0	0%
Public Health	16	8	8	50%	3	4	44%	5	4	56%	0	7	5	2	1	1	7	6	81%	1	2	19%
TOTAL OUHSC	992	213	779	79%	160	583	75%	53	196	25%	247	521	103	78	33	9	204	725	94%	9	54	6%
Allied Health	86	3	83	97%	2	61	73%	1	22	27%	27	51	5	2	0	0	1	79	93%	2	4	7%
Dentistry	48	2	46	96%	2	43	94%	0	3	6%	6	32	6	4	0	0	2	46	100%	0	0	0%
Graduate -CTS	1	1	0	0%	0	0	0%	1	0	100%	0	1	0	0	0	0	1	0	100%	0	0	0%
Medicine	226	110	116	51%	78	88	73%	32	28	27%	1	188	24	11	2	0	110	111	98%	0	5	2%
Nursing	516	57	459	89%	46	333	73%	11	126	27%	203	184	40	53	28	8	53	425	93%	4	34	7%
Pharmacy	63	20	43	68%	19	41	95%	1	2	5%	10	41	9	2	1	0	20	43	100%	0	0	0%
Public Health	50	19	31	62%	13	17	60%	6	14	40%	0	23	19	5	2	1	17	21	76%	2	10	24%
Norman Inter-Campus	0	0	0	-	0	0	-	0	0	-	0	0	0	0	0	0	0	0	-	0	0	-
Non-Degree	2	1	1	50%	0	0	0%	1	1	100%	0	1	0	1	0	0	0	0	0%	1	1	100%

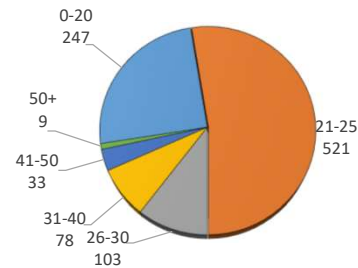
A&E BY GENDER



RESIDENCY STATUS



AGE DISTRIBUTION



ENROLLMENT STATUS

